

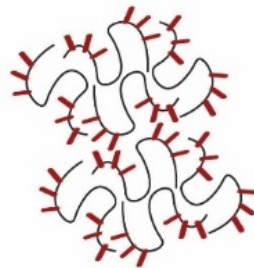
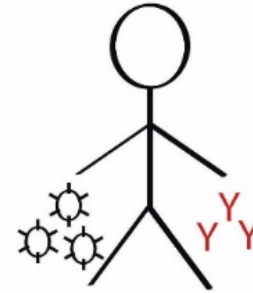
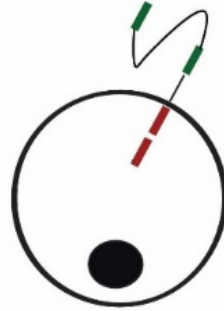
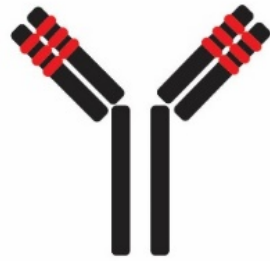
Modulating Innate Immune Responses in Non-communicable diseases such as Diabetes

Ph.D. Topic for Sept. 2020

Laboratory of Siddharth Jhunjunwala (BSSE)

Siddharth Jhunjhunwala's Laboratory works on -

Engineering the immune system to alter disease outcomes



S. Jhunjhunwala. *J Ind. Insti. Sci.* (2018)

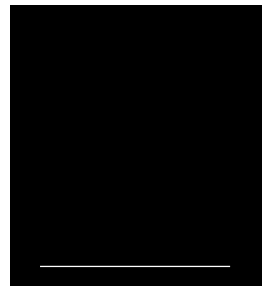
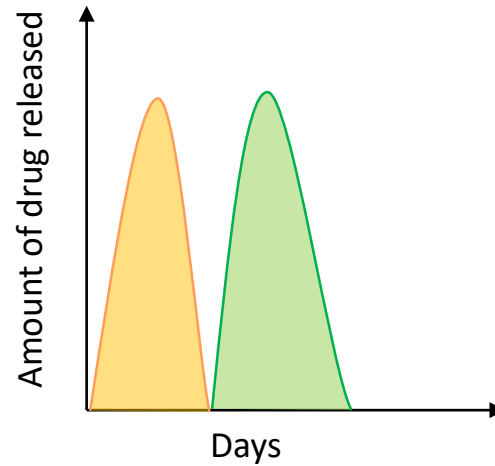
Past work

Diabetic Foot Ulcers

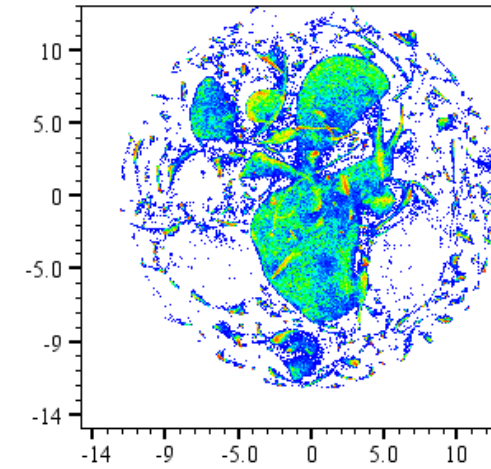


*Captured at KIER,
Jayadeva Hospital,
Bengaluru*

Scaffolds for Drug Delivery



Characterizing Immune Response



*tSNE plots of immune
phenotype (cells from
diabetic patients)*

What will this project entail -

Questions:

1. What is the effect of immuno-modulatory drugs on immune cells isolated from diabetic mice and humans
2. Developing drug delivery systems for controlled release of immuno-modulatory therapeutics
3. Assessing the efficacy of aforementioned systems in rodent models of diabetes